

Model:A635GT

Ex



Android



Parameters

CPU	MT6833-5G-C(Tiangu 700), 8-core, 2.2GHZ
OS	Android 12
Memory	8GB+256GB
Size/Weight	172.3*73.7*17.9mm/347g (without DRM antenna)
Ex(Optional)	EX Class II petrochemical explosion-proof
Color	Black
Screen	FHD 1080*2340 , Brightness 500cd/m ² , Corning Gorilla IV OGS full lamination 10-point touch G+G, hardness ≥ 7H
Camera	Front Camera:8.0MP Rear Camera:48MP+5.0MP Auto Focus, Flash
WIFI /BT	Support 2.4G+5G dual-band WiFi IEEE802.11 a/b/g/n/ac+5.0
Battery Capacity	4.4V 6000mAh Li-Polymer battery, removable
Charger	Type-c direct charger 15W

I/O Interface	TYPE-Cx1 (Charging, data transfer、 OTG) SIM/TF card slot x1 (Dual Nano SIM / SIM+TF card, 2 choose 1) POGO PIN x1 (2Pin Charging)
5G	Support
GPS	GPS, Beidou, Galileo, GLONASS (Single Beidou optional)
NFC	Support 13.56MHz standard communication protocol, support protocol ISO144 43A and 15693 (support ID card identification)
POC	Support POC public network intercom, no distance limitation in the world
High precision	Support high-precision positioning, centimeter-level positioning accuracy (optional)
DMR hardware intercom (optional)	Intercom distance: ≤5km Support digital + analog intercom, 2 in 1, power 4W, DMR protocol built-in 400/480MHz (UHF) Full-band radio intercom module (VHF can be customized)

Features:

- 1.Support Android 12 system, fast running speed, stable performance, easy to operate;
- 2.Integrated 5G full network pass, WiFi, Bluetooth and other communication modes, powerful wireless communication;
3. Built-in 6000mAh polymer lithium-ion battery, support 5V3A 15W fast charging, standby time > 300 hours, excellent adaptation to the needs of mobile work in a variety of environments;
4. Industrial-grade triple-proof quality, shockproof and impact-resistant, can be applied to a variety of complex and demanding work environment;
5. Support GPS, Galileo, Glonass, Beidou, more accurate positioning;
6. Support POC public network intercom, no distance limitation in the world, customized optional DMR hardware intercom, support digital + analog intercom 2 in 1, power 4W, DMR protocol, built-in 400/480MHz (UHF) full-band radio intercom.

Optional accessories



Charging base

Functions



Android

5G

5G module



Positioning Module



WiFi/BT



Fingerprint
Unlock



Camera



NFC Module

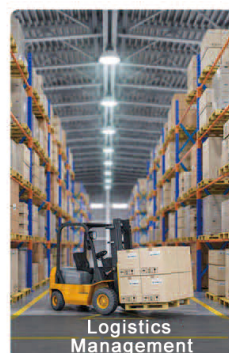
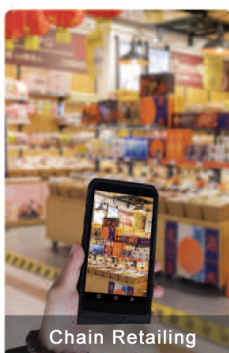
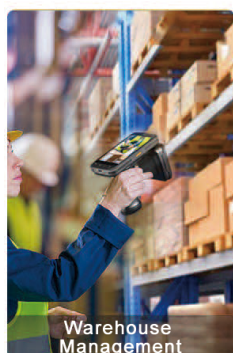


Memory

Interfaces



Application



Warm reminder: product data is for reference only, the specific parameters please prevail in kind, such as changes in the work, without notice. Updated/2024/12/10

SHALEMA
MERCHANDISE 莎乐玛

Telephone : +91-9526777791
www.shalemagroup.com

Email : trade@cenavapc.com Address : Sales office :14/5,(Old No.11/11A), Shalema Building, HOC
Junction,Ambalamugal-682302,Ernakulam District, KERALA, INDIA

Head office 4 Floor, 99-9, Dayang Road, Rentian Community, Fuhai Street, Bao'an District, Shenzhen,China